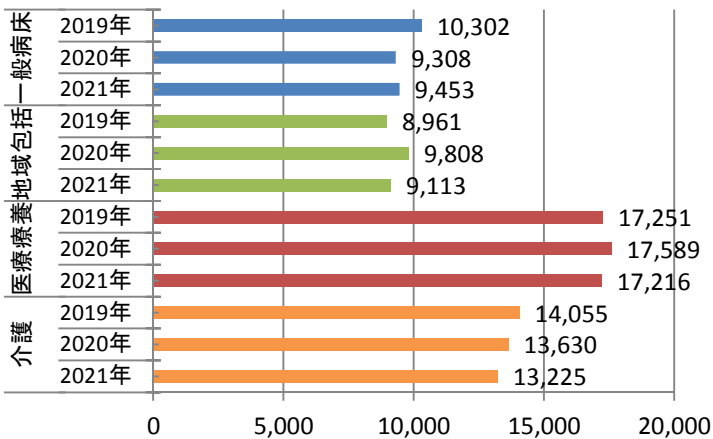
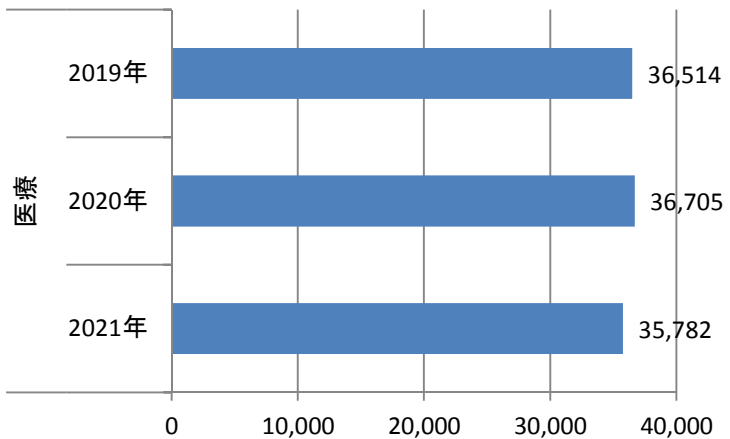


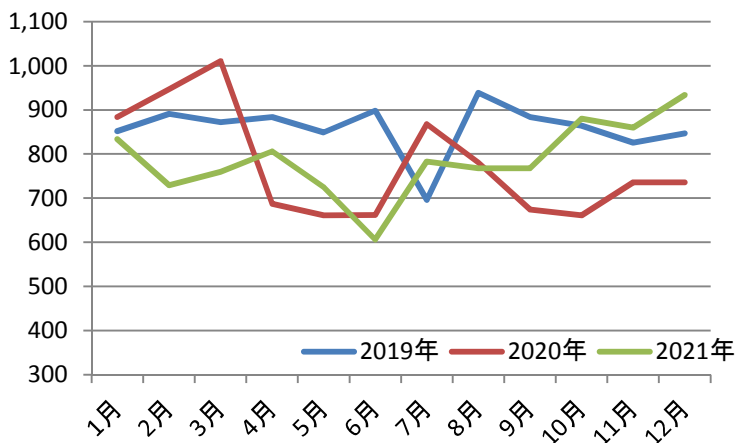
年別病床別 入院延患者数合計



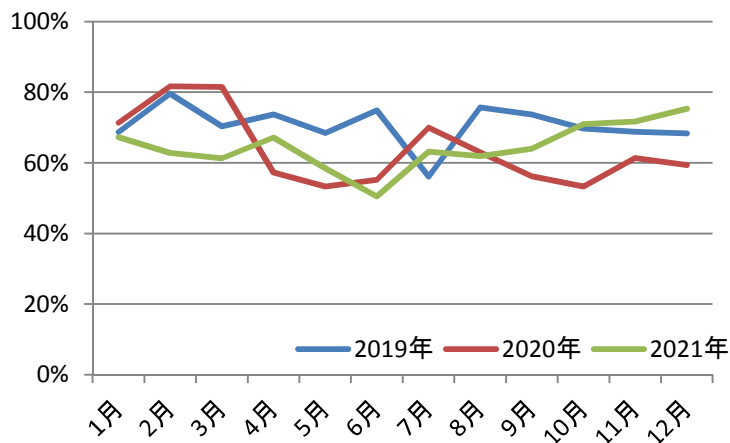
年別 2階～4階入院延患者数合計



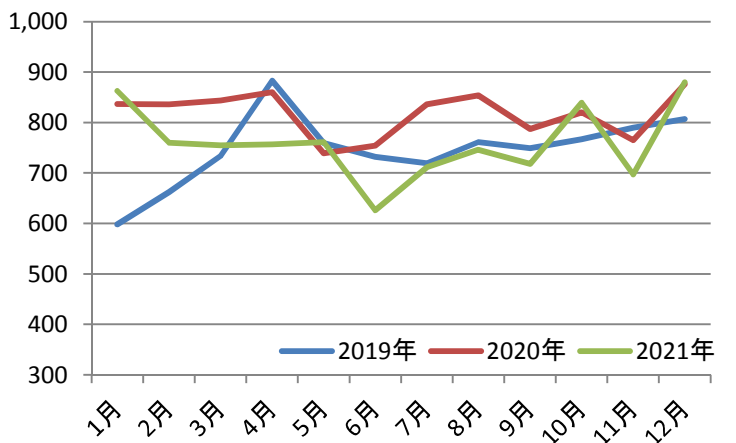
年別入院延患者数(一般病床)



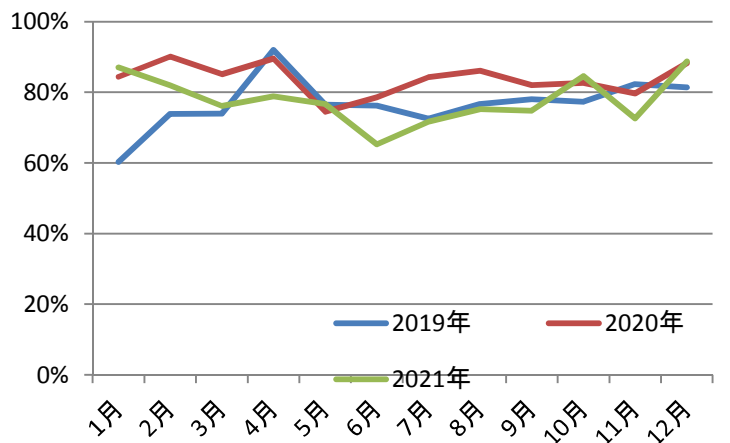
年別病床利用率(一般病床)



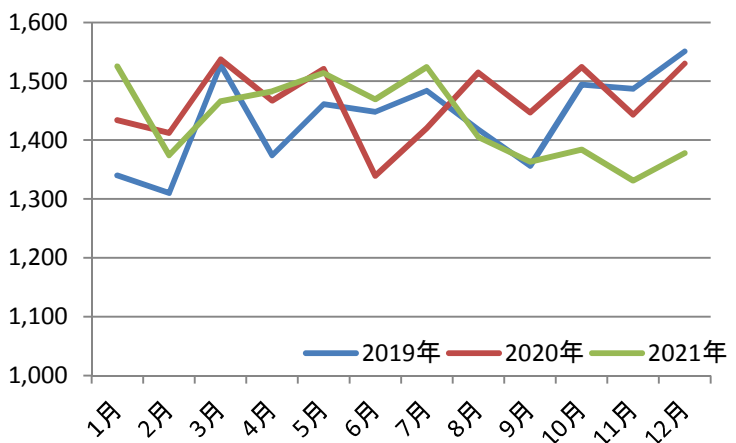
年別入院延患者数(地域包括)



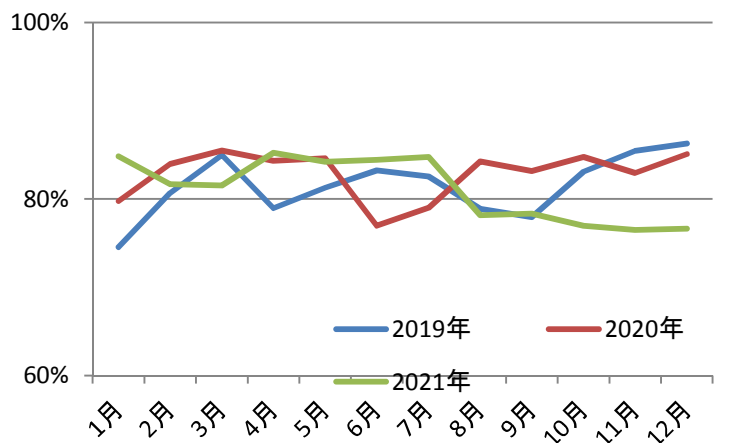
年別病床利用率(地域包括)



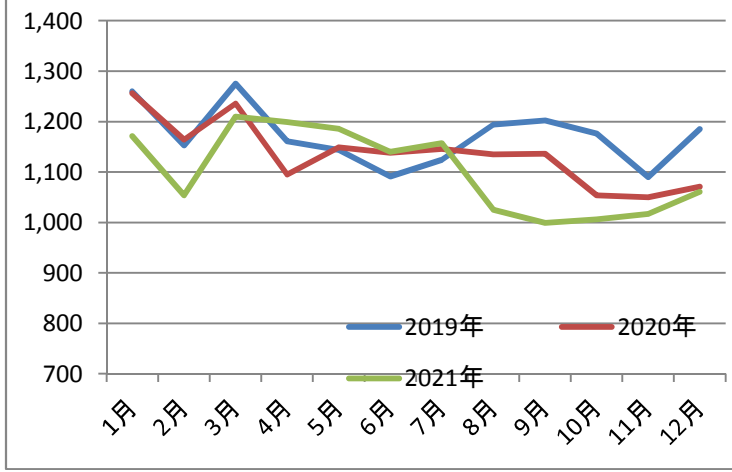
年別入院延患者数(療養病床)



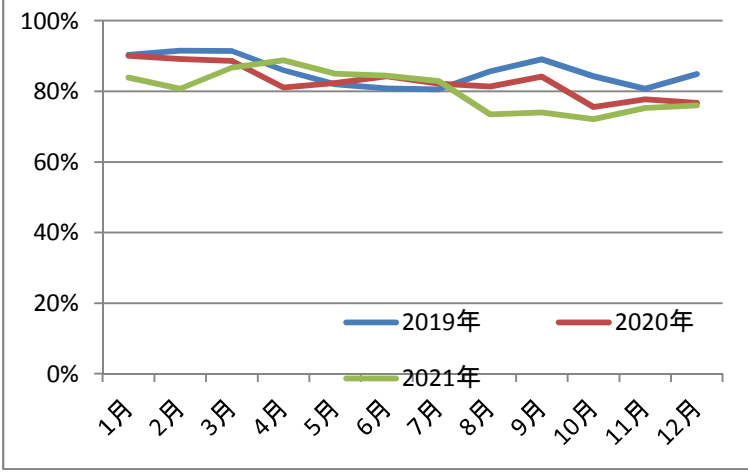
年別病床利用率(療養病床)



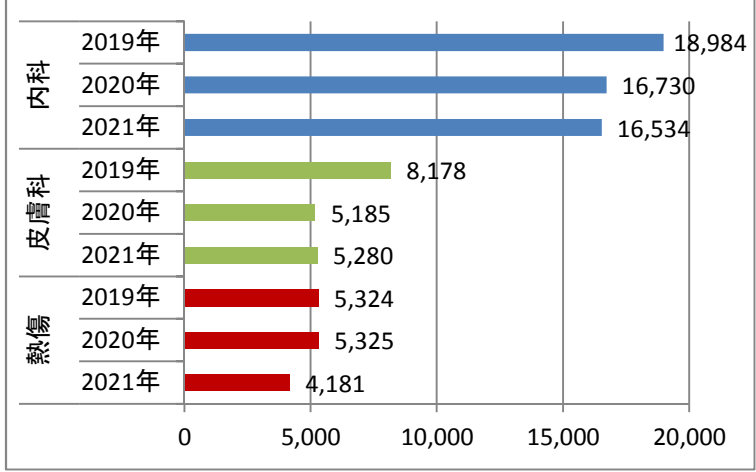
年別入院延患者数(介護)



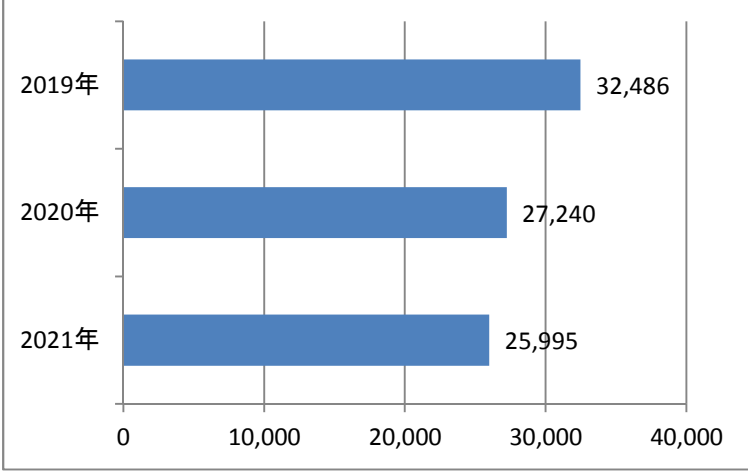
年別病床利用率(介護)



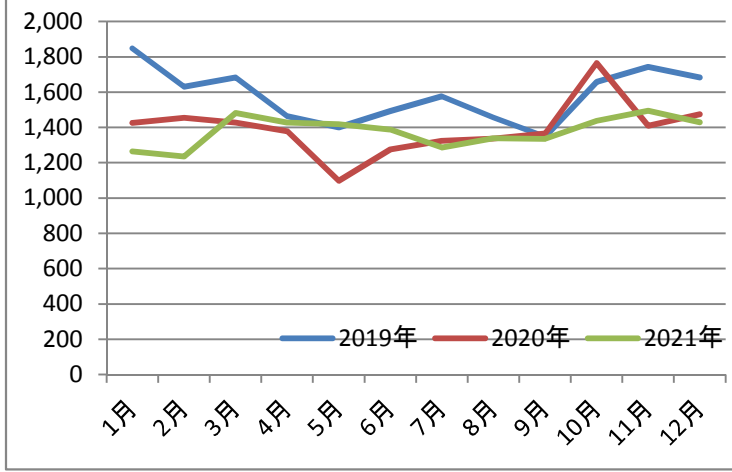
年別科別 外来延患者数合計



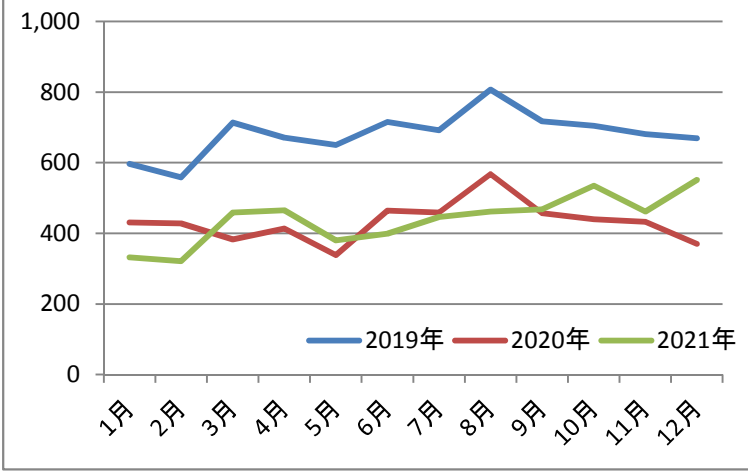
外来延患者数合計



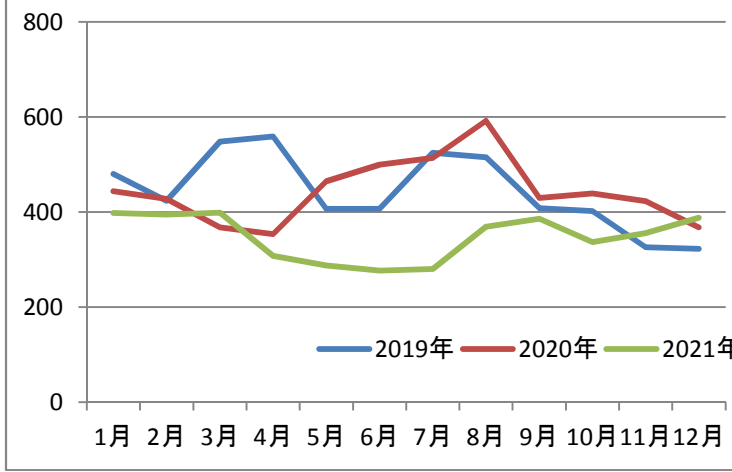
年別月別外来延患者数(内科)



年別月別外来延患者数(皮膚科)



年別月別外来延患者数(熱傷)



年別月別外来延患者数(合計)

